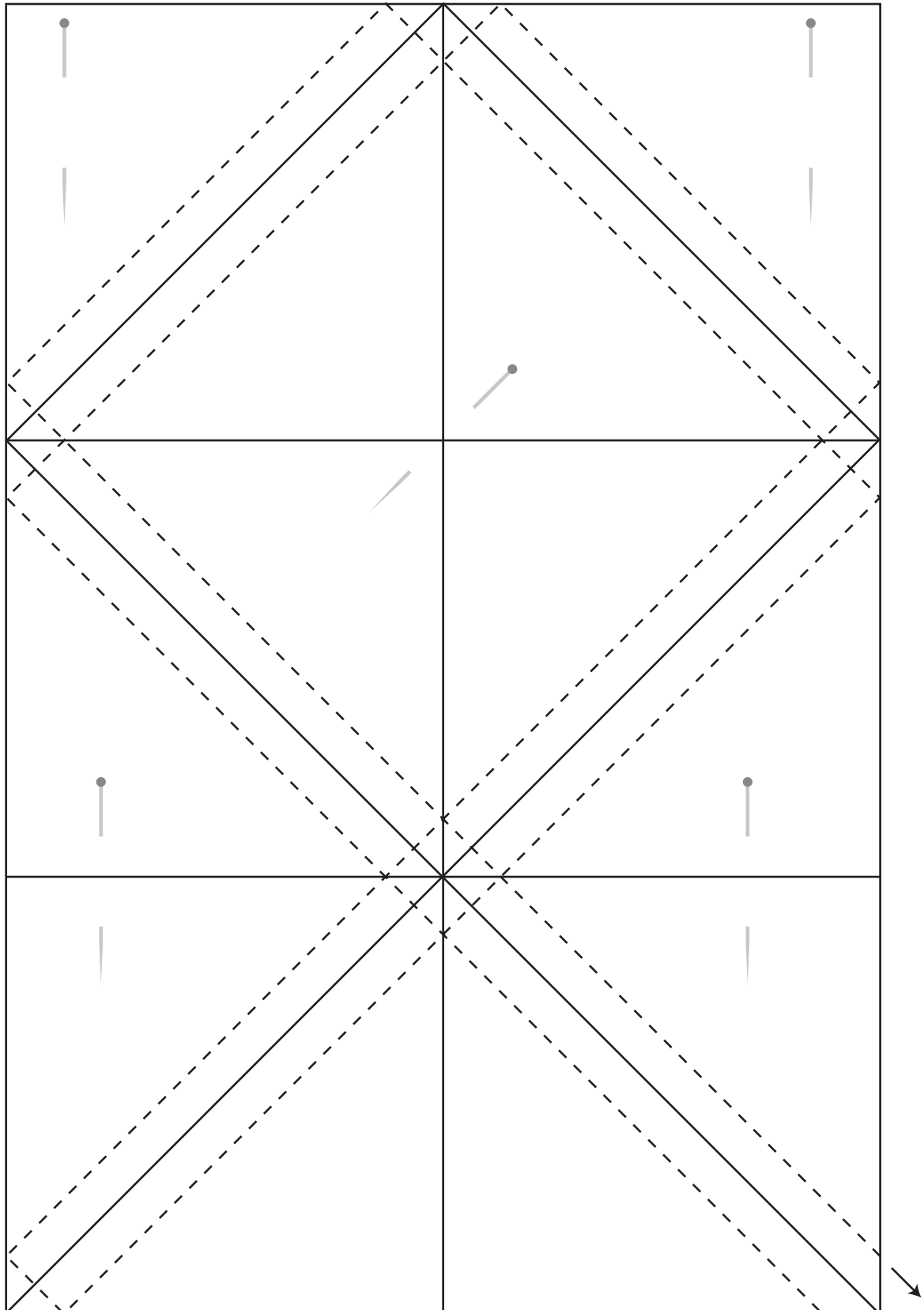


Twelve 2" Finished Half Square Triangles

Pin paper to fabric avoiding the dashed lines.
Stitch on the dashed lines and cut on the solid lines.



Print this out using Adobe Acrobat. Make sure that you print at 100% - you can double check by measuring these squares which should be $2\frac{7}{8}'' \times 2\frac{7}{8}''$.

Start here